



# KLR 970



944, Des Hérons  
Saint-Pie, (Qc) Canada  
J0H 1W0

T : (450) 388-0404  
T : 1-800-918-8777

info@klrsystems.com  
[www.klrsystems.com](http://www.klrsystems.com)



DEPUIS/SINCE  
1977



## Contents

1.0: SAFETY PRECAUTIONS.....	2
2.0: IDENTIFICATION .....	3
2.1: The product brand and type designation .....	3
2.2: Version of product .....	3
2.3: Manufacturer contact.....	3
3.0: PRODUCT SPECIFICATION .....	3
3.1: Declaration of conformity with standards of products .....	3
3.2: Flow diagram (right or left).....	4
3.3: Range of applications intended use and general functions.....	4
3.4: Dimensions (for transport) .....	4
3.5: Specification for electricity and air .....	5
3.6: Bags specification.....	5
4.0: INSTALLATION .....	5
4.1: To be checked before the arrival of the machine.....	5
4.2: Minimal space required .....	5
4.3: Electricity availability .....	6
4.4: Bolt pattern .....	6
5.0: OPERATION .....	7
5.1: Setup .....	7
5.1.1: Height adjustment .....	7
5.1.2: Depth adjustment .....	8
5.1.3: Tension adjustment .....	8
5.1: Start the machine.....	9
6.0: MAINTENANCE AND CLEANING .....	9
6.1: Preventive maintenance schedule.....	9
6.2: Cleaning.....	10
6.3: Troubleshooting.....	10
7.0: Contact information for service technicians.....	10
8.0: LISTS OF SPARE PARTS AND CONSUMABLES .....	11
9.0: DECOMMISSIONING OF THE PRODUCT .....	11
10.0: EXPLODED VIEWS.....	11

10.1: Upper part..... 13  
10.1: Lower part..... 14  
ELECTRICAL PLAN ..... 15

## 1.0: SAFETY PRECAUTIONS

# CAUTION

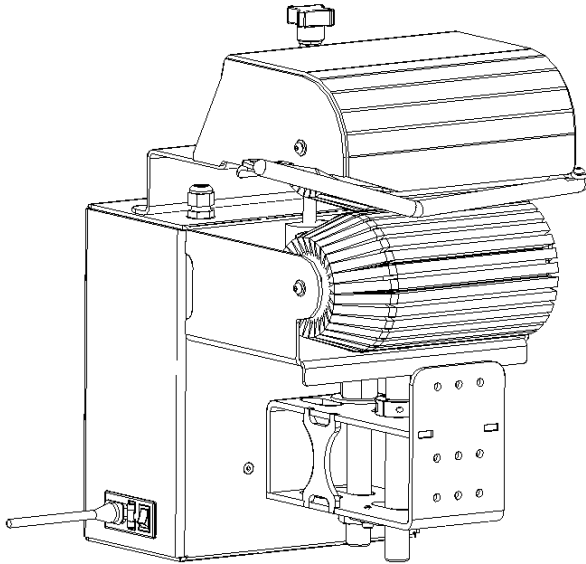
- The equipment described in this manual designed and manufactured to the highest KLR standards. Special attention made to ensure that the operation of the machine is safe and convenient. Keep hands away from mechanisms.
- Even with the safety covers, keep hands away from the working machine. Do not force through gaps. Always unplug the equipment before removing a jam, cleaning, or doing any kind of maintenance.
- If the system is linked to another machine via interlock (wired relay or other systems) or install onto another machine. Lock the electrical box of the other machines before performing any maintenance on this equipment. Please refer to the local regulations and laws on locking out machinery.
- When working in the electrical box. Disconnect the equipment at the source and use a lockout device to avoid any risk of danger. Make sure you also have the space required to complete the work to avoid any risk of danger.
- Any modifications with any aspect of the mechanical, safety, electrical design, design, or any parts connected with the equipment will void the warranty and liability of KLR Systems. If a change is required, contact KLR Systems for approval. All technical handling must be done by a qualified technician or by KLR Systems.
- KLR is not responsible for any abuse, mishandling, misuse, improper maintenance and repair by owners and users.
- Equipment must be supervised when working.
- This machine designed to be as safe as possible. Danger areas have been enclosed with guards and doors for better protection.
- Safety panel (fix panel) or safety doors: As a safety, component does not try to remove or unscrew them unless it is necessary for a maintenance operation. If it is the only option, use a lockout device during this procedure and reassemble every single piece as it was when finished.

## 2.0: IDENTIFICATION

### 2.1: The product brand and type designation

KLR.970

Bag tensioner



### 2.2: Version of product

Serial number: located close to the electrical box .

### 2.3: Manufacturer contact

KLR SYSTEMS INC. Packaging equipment manufacturer

Address: 944 Herons street,

City, province, country: SAINT-PIE, QUEBEC, CANADA

Zip code: J0H 1L0

Phone number: 450-388-0404

Web site: <http://klrsystems.com/>

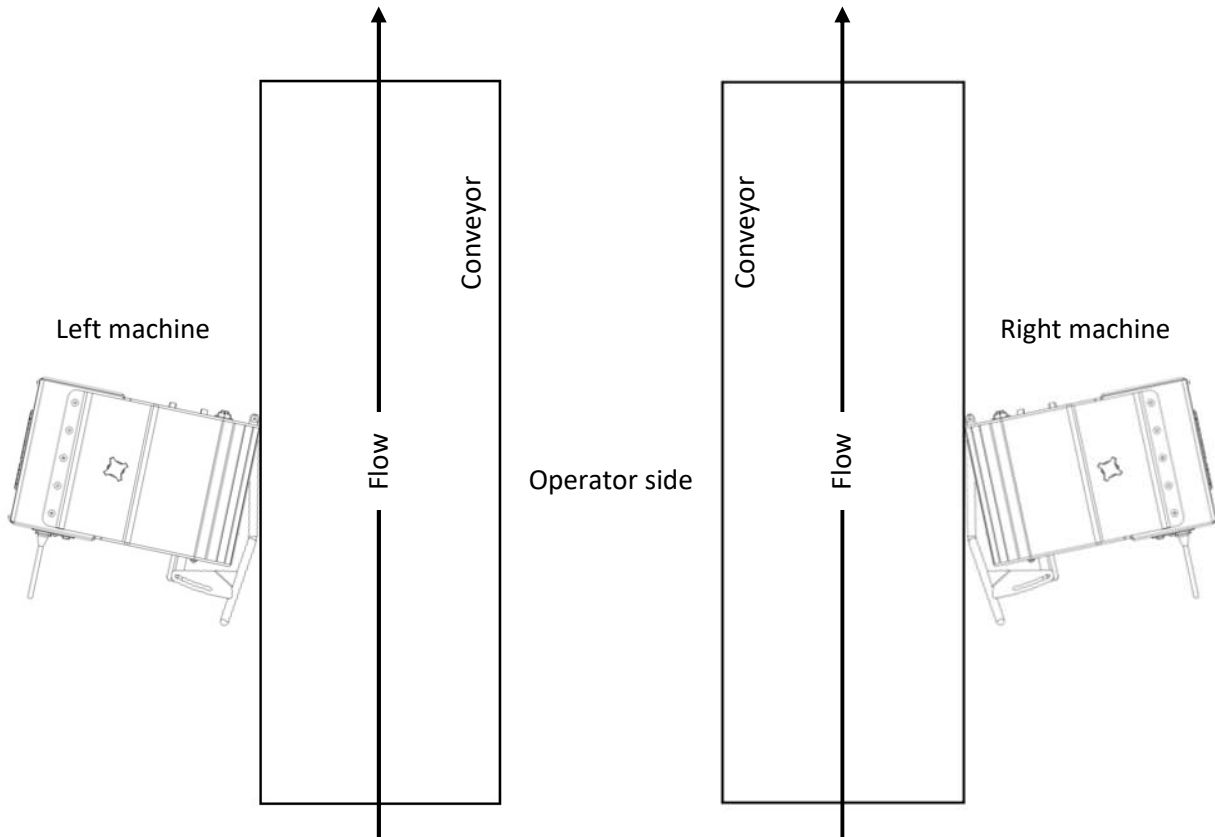
## 3.0: PRODUCT SPECIFICATION

### 3.1: Declaration of conformity with standards of products

Standard: None

### 3.2: Flow diagram (right or left)

Here is a picture to help recognize the side of the machine:



### 3.3: Range of applications intended use and general functions

The KLR.970 is designed to tension and flatten the bag prior to the bag closing machine.

### 3.4: Dimensions (for transport)

Height: 17.5 inches

Length: 15.5 inches

Width: 13 inches

### 3.5: Specification for electricity and air

This machine is intended to use these specifications:

Electrical need: 120 Volts – 1 Amps – 1 Phase – 60 Hertz

Need a 3 pins female jack power cord adapter 18AWG. Provided in the packaging with the machine:

PE-01531-15-5P-6



In case of loss, order from KLR to get a new one and be sure to have the cord as per requirement for your machine.

Pneumatic need: None

### 3.6: Bags specification

KLR systems is not responsible for the suitability of the customer bags. It is recommended to carefully select the bag type with KLR to avoid mistakes.

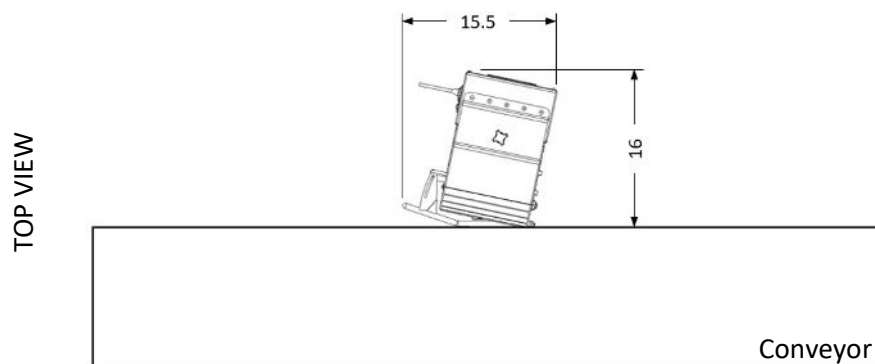
## 4.0: INSTALLATION

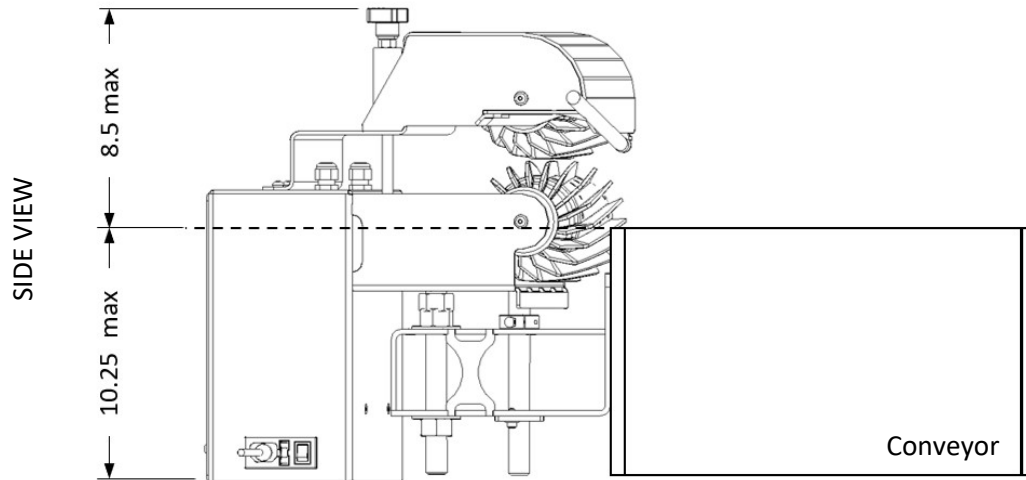
### 4.1: To be checked before the arrival of the machine

- Check the minimum space required where the equipment is wanted to be installed.
- Make sure of the electricity demand will be available for the technician.
- If the machine will not be installed on a KLR conveyor. Look at the bolt pattern picture for reference.

### 4.2: Minimal space required

Minimal space required to install this equipment. Be aware that the following picture is showing a left version. Dimensions are in inches:



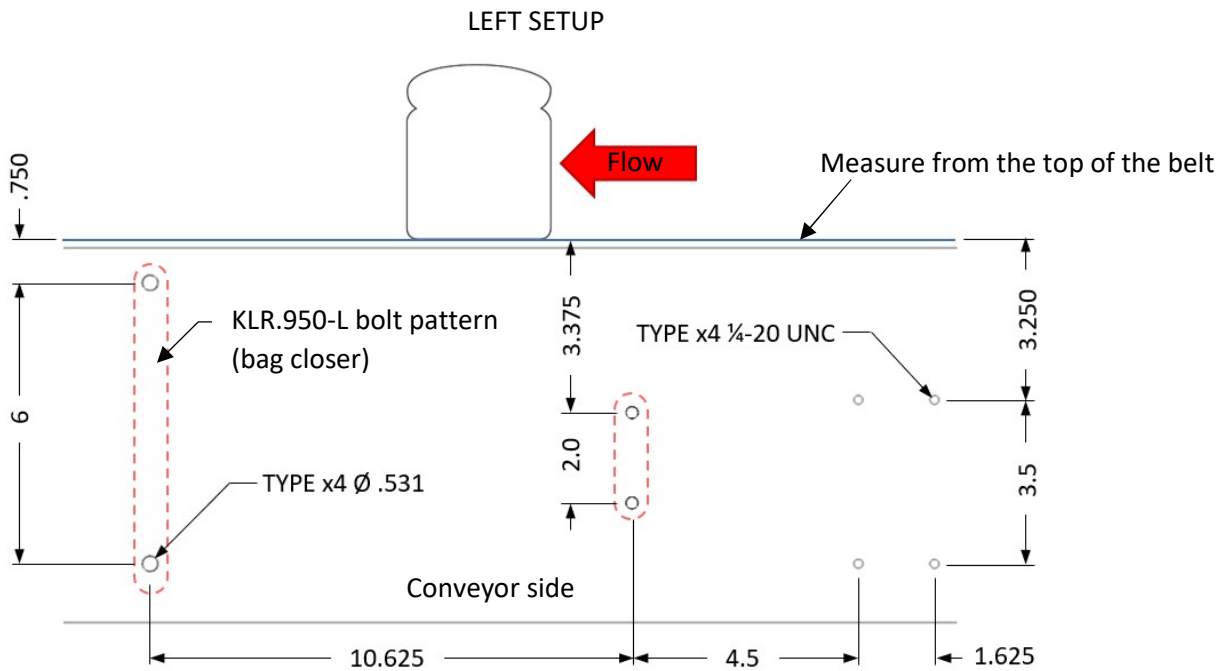


**4.3: Electricity availability**

Standard 120v outlet should be available within 5 feet of the machine.


**4.4: Bolt pattern**

Follow these instructions in case of preparation before the arrival of the machine. This is for a left setup. Right setup would be mirror of this picture. See **Flow diagram (right or left)** to know what side is to be prepared





## 5.0: OPERATION

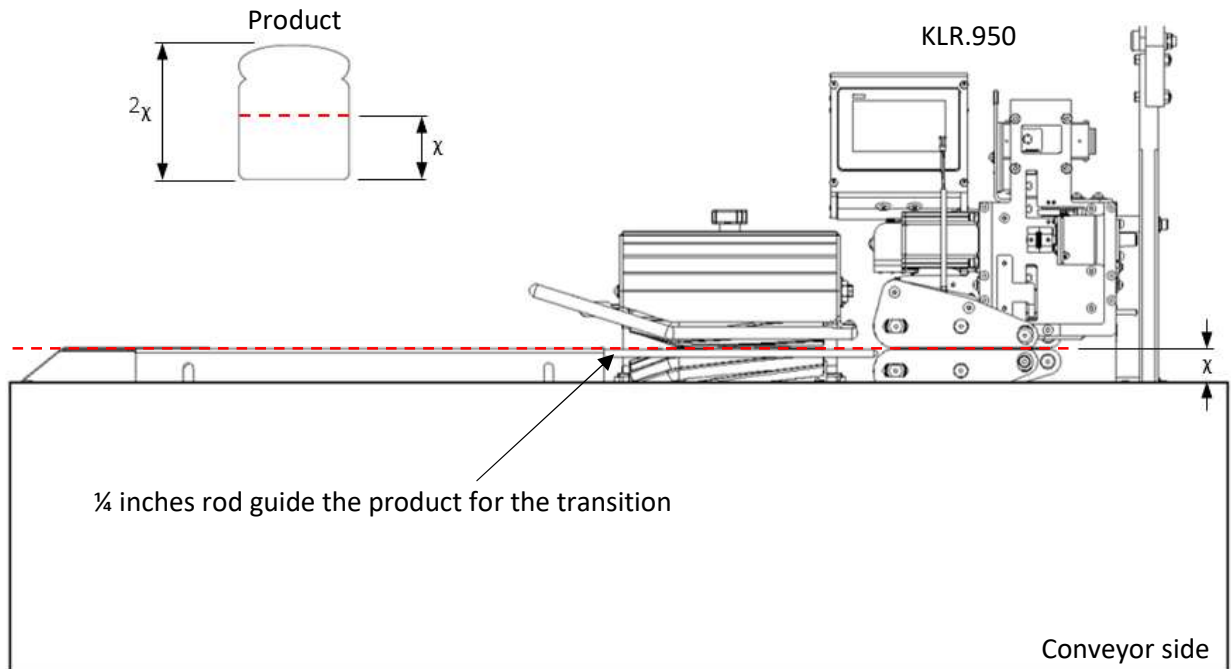
	<p>➤ Before operating the machine, every operator of the machine and maintenance personnel take part in a training session given by KLR systems technicians.</p>
---	--

### 5.1: Setup

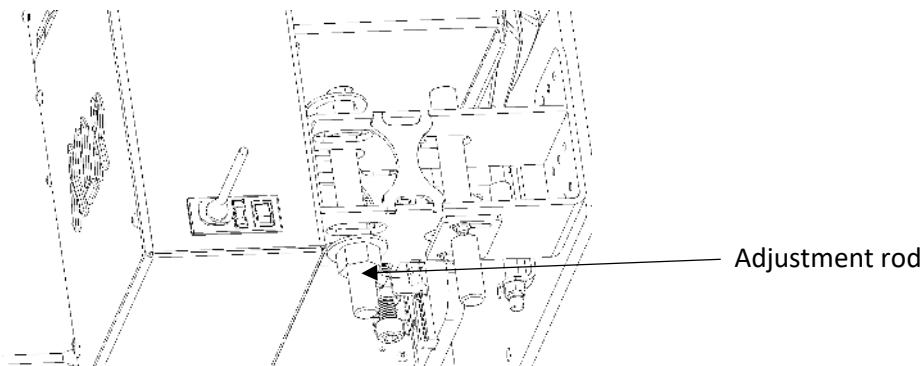
Follow these explanations to adjust the machine

#### 5.1.1: Height adjustment

For the height adjustment, every system (guides, bag tensionner and bag closing machine) must be at the same height to work properly together. In the example, the imaginary line is set by the half height of the product. If the product is 2 inches high, the line must be adjust at 1 inch from the top of the conveyor belt.

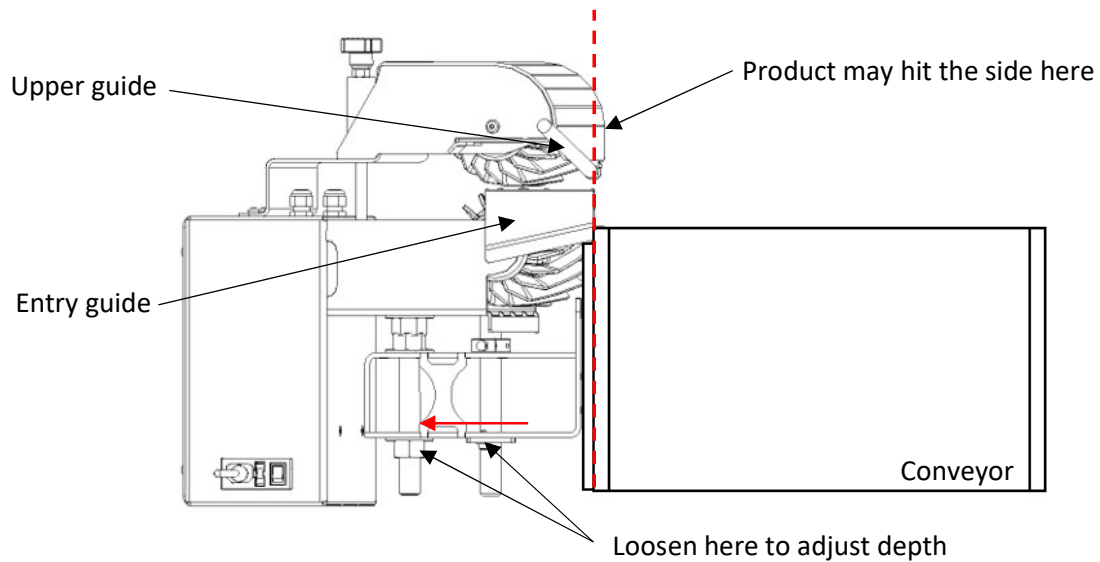


To adjust the bag tensionner, go underneath and use the adjustment rod:



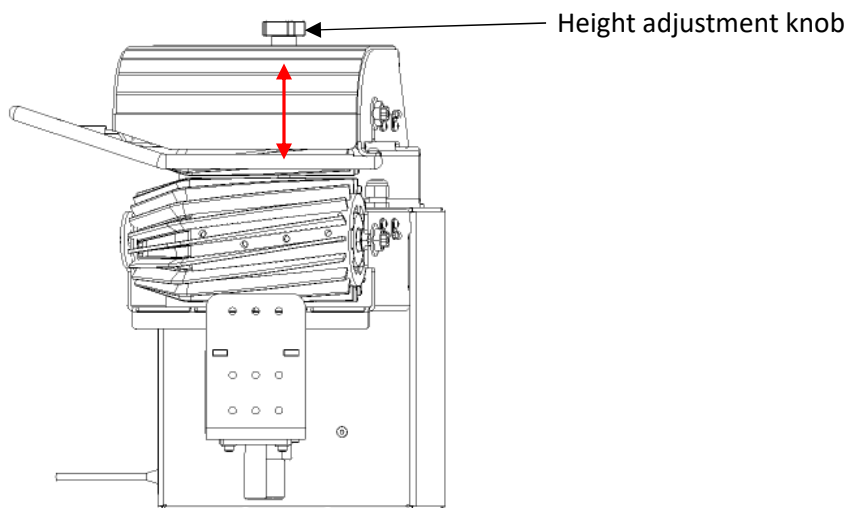
### 5.1.2: Depth adjustment

In the following example, the bag tensionner has been installed on a conveyor. But it must be adjusted in depth. The upper guide must be equal or little behind the entry guide.



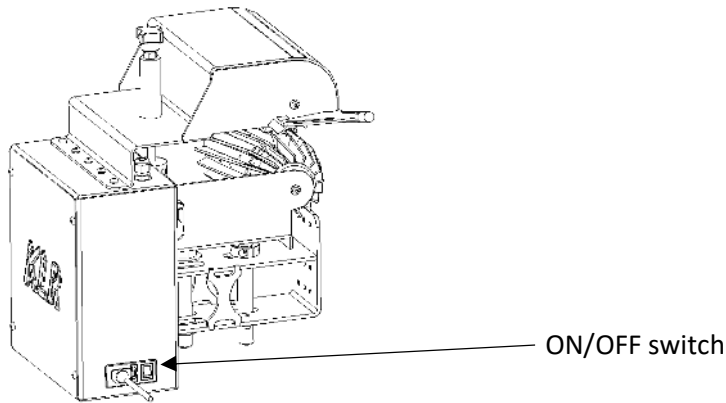
### 5.1.3: Tension adjustment

The pressure must be gently applied on the bag tail. A too strong pressure will damage the bag or damage the brushes on the equipment. Moreover, the bag tensionner is not made to pull the product toward the side of the conveyor in order to close it.



**5.1: Start the machine**

1. Plug the machine in a standard 120v outlet.
2. Turn the switch ON.



**6.0: MAINTENANCE AND CLEANING**

**6.1: Preventive maintenance schedule**

Here is a quick way to take care of your machine by a preventive maintenance schedule. Due to the complexity of our machine, take note that these procedures are only advice and are subject to change. These time intervals will change according to the usage of the machine:

<b>PREVENTIVE MAINTENANCE SCHEDULE</b>			
<b>Location</b>	<b>Procedures</b>	<b>Time interval</b>	<b>Remarks</b>
Brushes.	Look for wear on the brushes.	6 months	If you need to tight hard on the pressure knob to grab a bag tail. The brushes may need to be replaced.
Bearings	Check for wear	When brushes replacement	None
Cleaning	Blow dust and remove crumbs	Daily	Always disconnect the equipment before any kind of maintenance including cleaning.

## 6.2: Cleaning

To be done every working day.

1. Disconnect the equipment.
2. Blow dust and remove crumb or plastic residues.

Products are not supposed to touch any parts of the machine. No need extra attention.

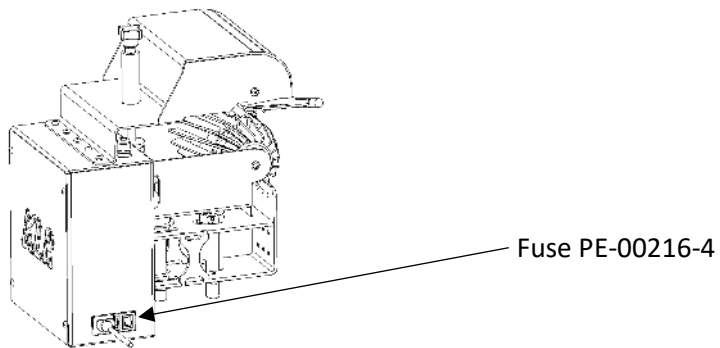
## 6.3: Troubleshooting

Problem:

The machine is plugged and the switch is turned ON, but the machine won't start.

Check:

1. Verify the 120v outlet breaker in your facility electrical box.
2. Verify the 4 amps fuse on the machine itself:



## 7.0: Contact information for service technicians

KLR SYSTEMS INC.

944 Herons street

SAINT-PIE, QUÉBEC, CANADA

JOH 1L0

450-388-0404

[Info@klrsystems.com](mailto:Info@klrsystems.com)

[www.klrsystems.com](http://www.klrsystems.com)

## 8.0: LISTS OF SPARE PARTS AND CONSUMABLES

There are multiple options available for your machine. If you need to order a piece, make sure to look in the right list. If you need assistance, see contact information right above.

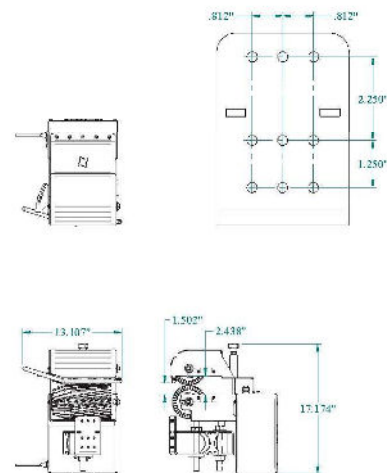
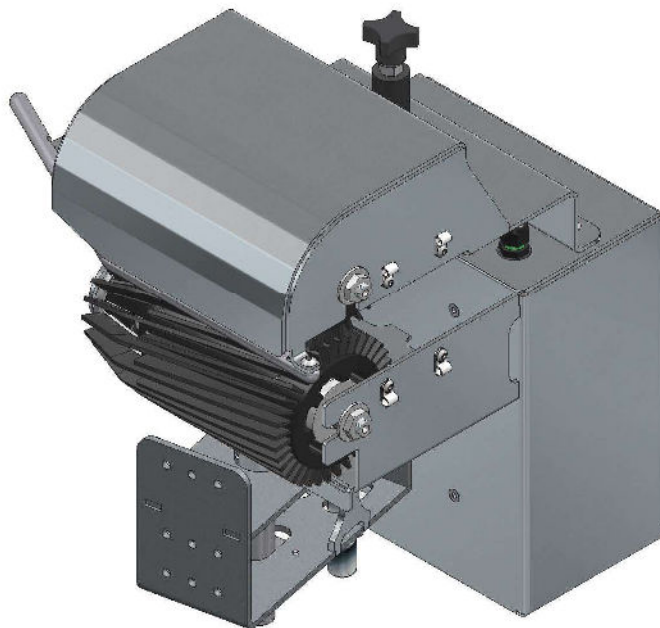
### Suggested spare part list per machine for KLR.970

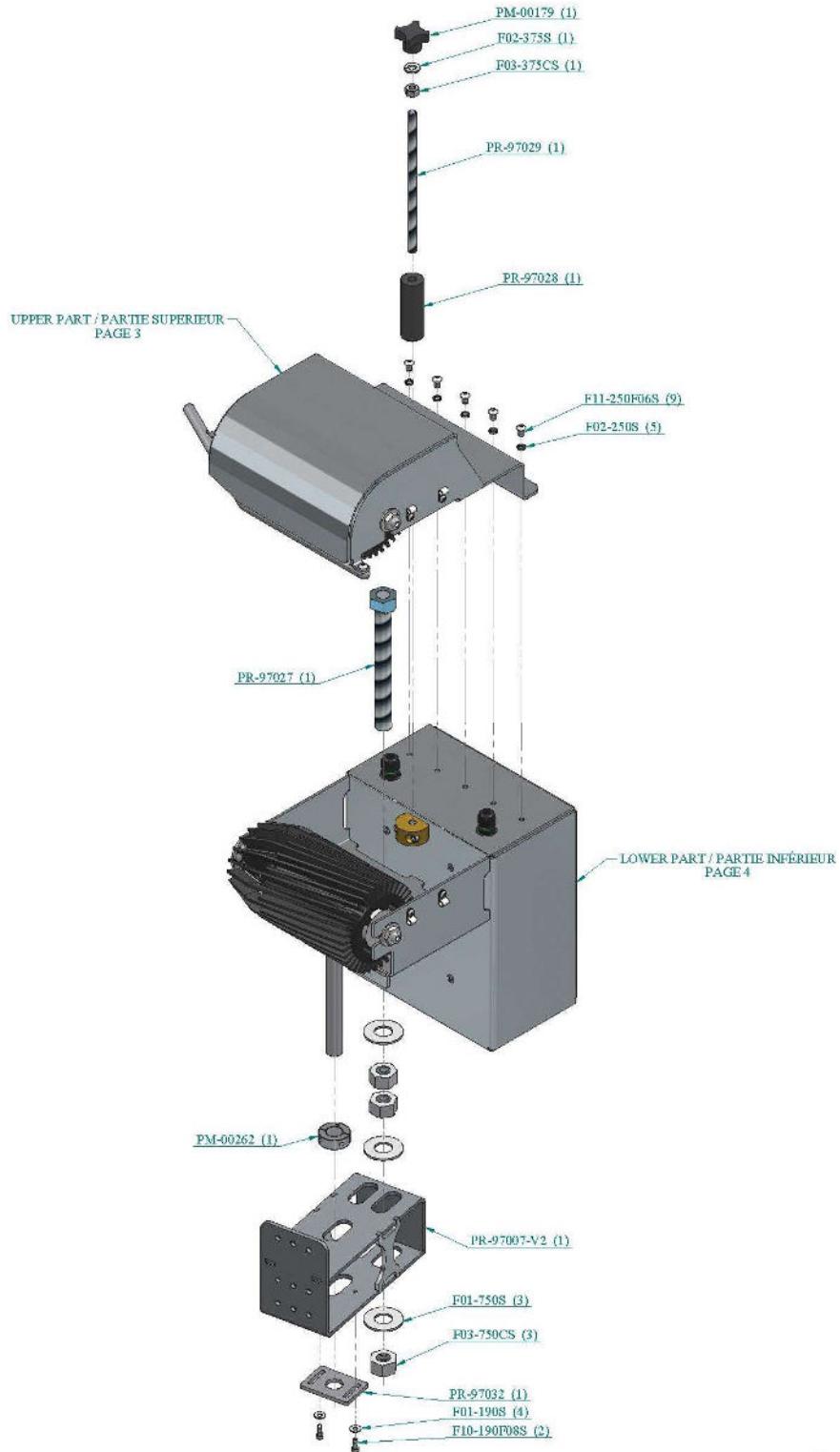
Numbers	Part numbers	Quantity	Descriptions
1	P02-00139	2	BEARING
2	PR-097017	40	CURVED BRUSHES
3	PR-097017-B	40	BRUSHES
4	PE-00814	1	MOTOR DRIVE
5	PR-097022	1	DRUM MOTOR
6	PE-00216-4	5	4A GLASS FUSE
7	PE-00222	4	4A FUSE

## 9.0: DECOMMISSIONING OF THE PRODUCT

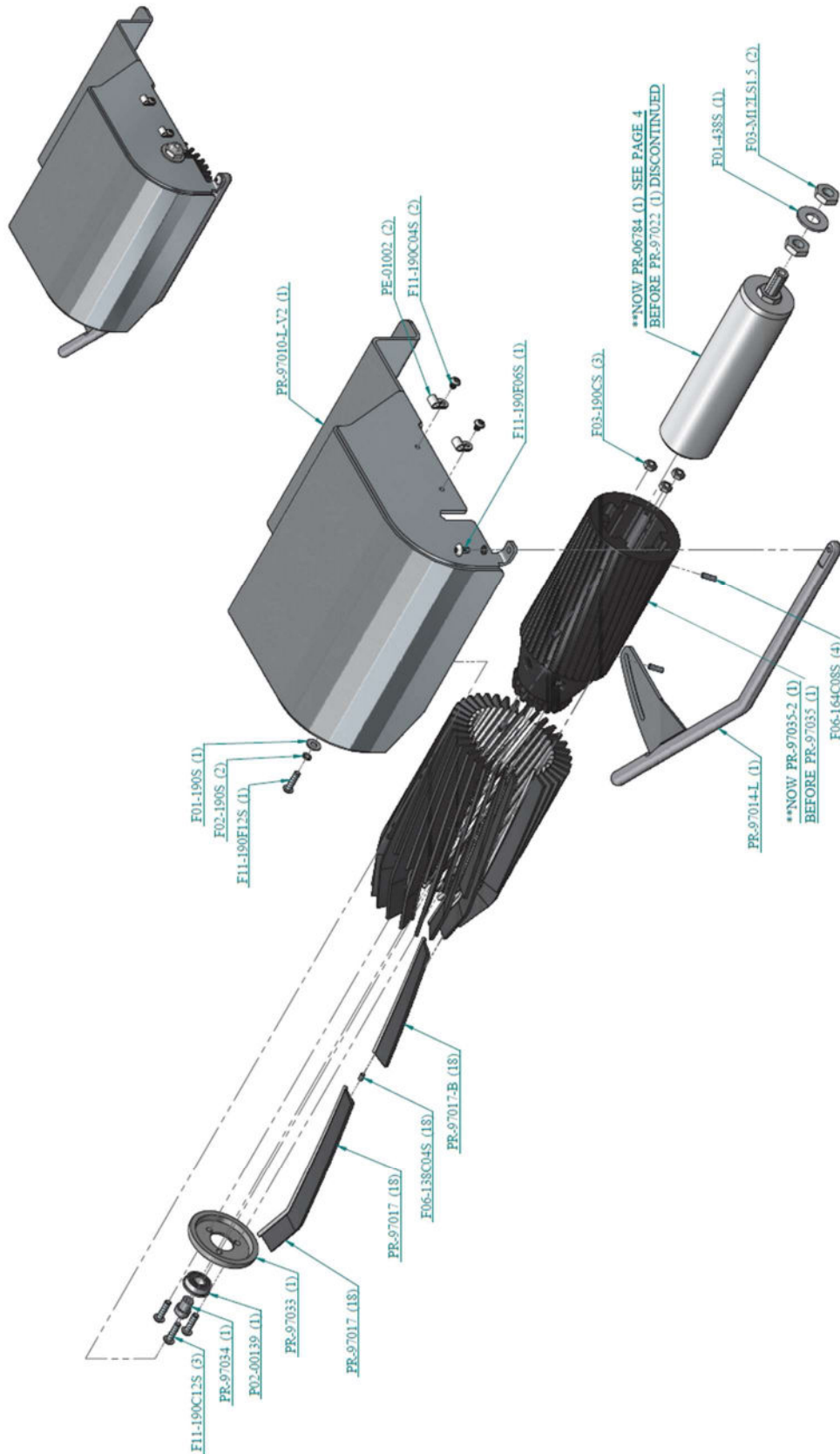
It is advisable to plan a tour of KLR to reinstall the equipment after a prolonged deactivation or a move, destruction, recycling, disposal.

## 10.0: EXPLODED VIEWS





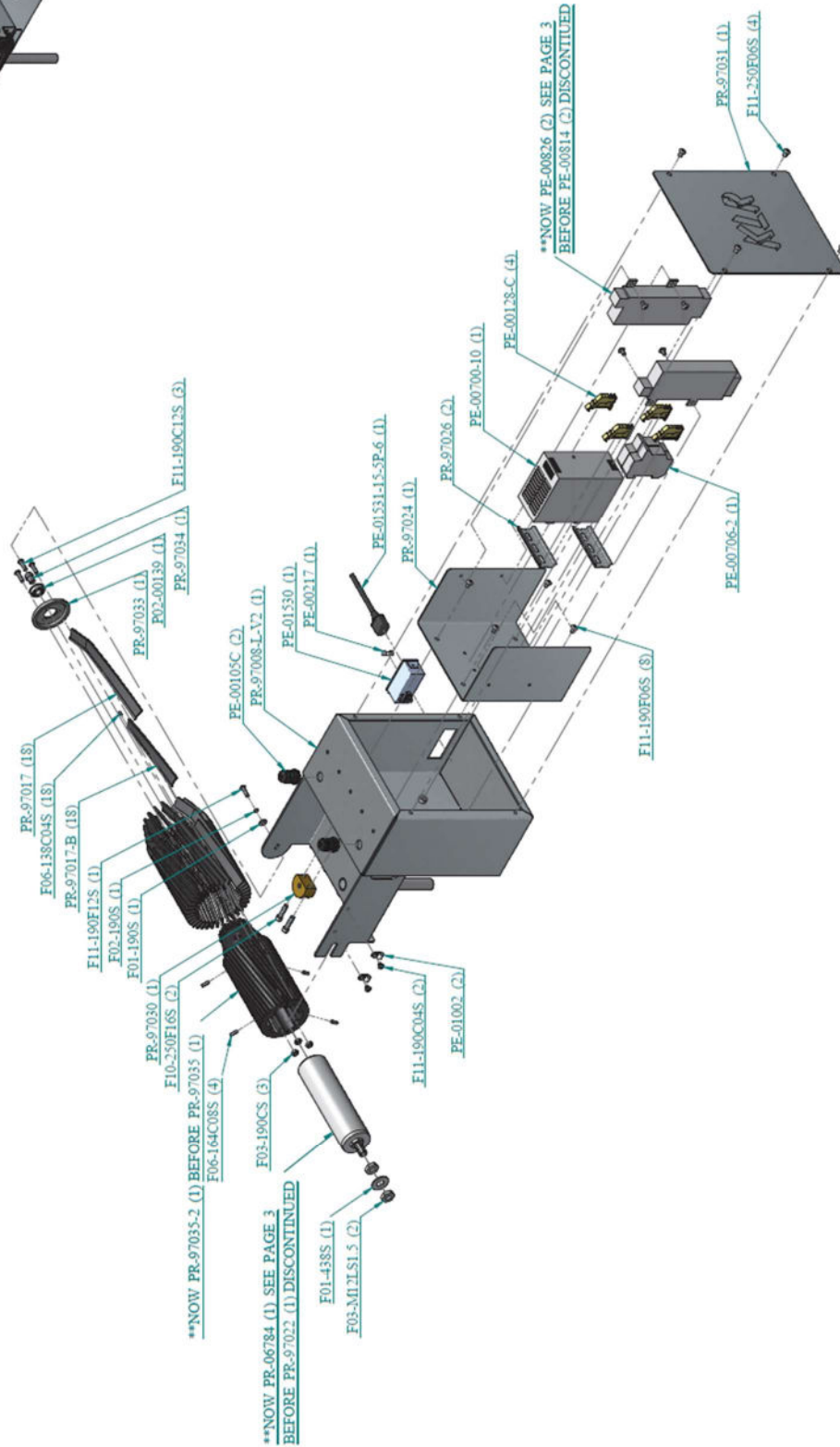
10.1: Upper part



\*\* PR-97022, PR-97014-L AND PE-00814 ARE DISCONTINUED. TO HAVE REPLACEMENT PARTS, ALL THE PARTS MARQUED WITH \*\* NEED TO CHANGE TO THE NEW VERSION.



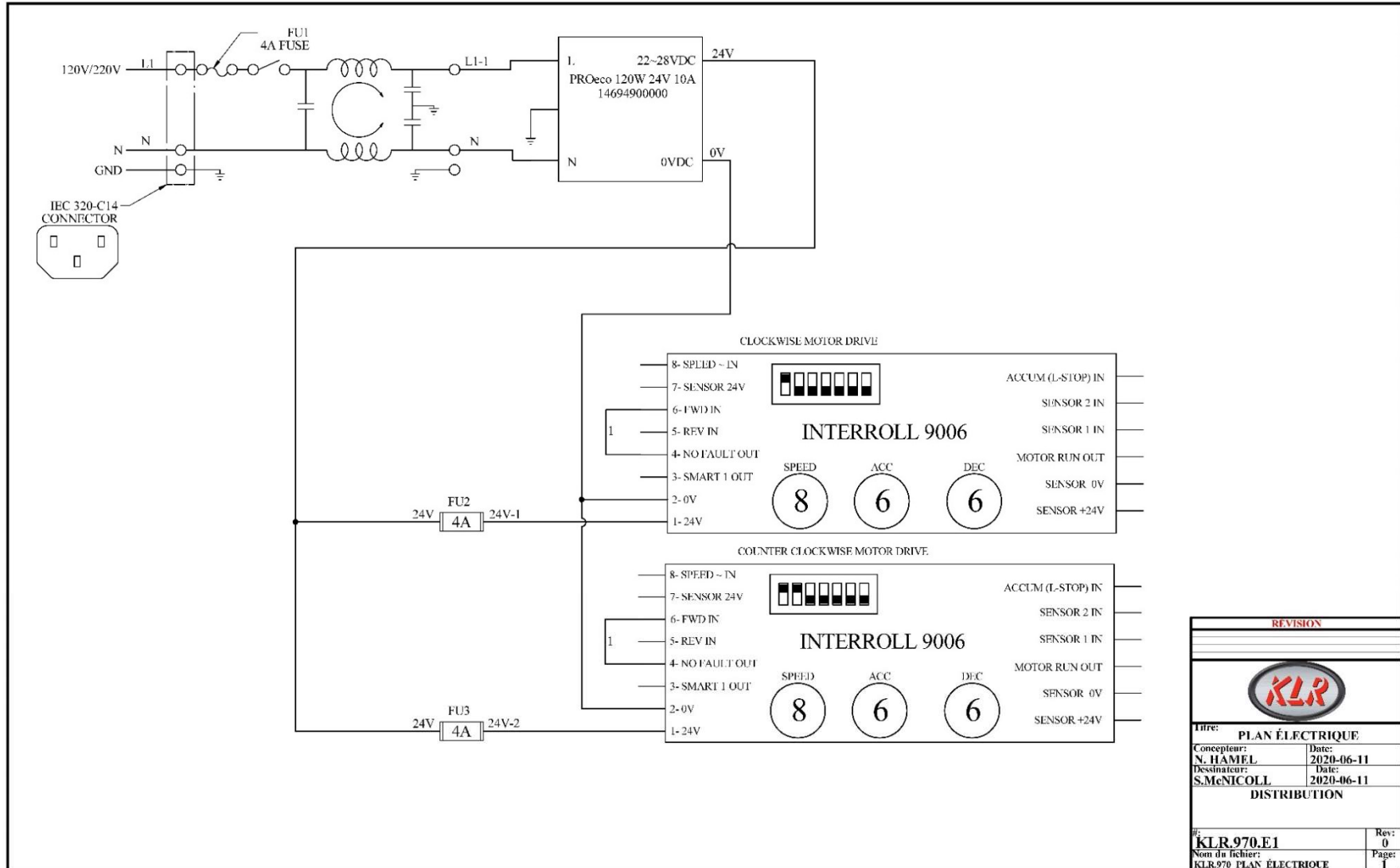
10.1: Lower part




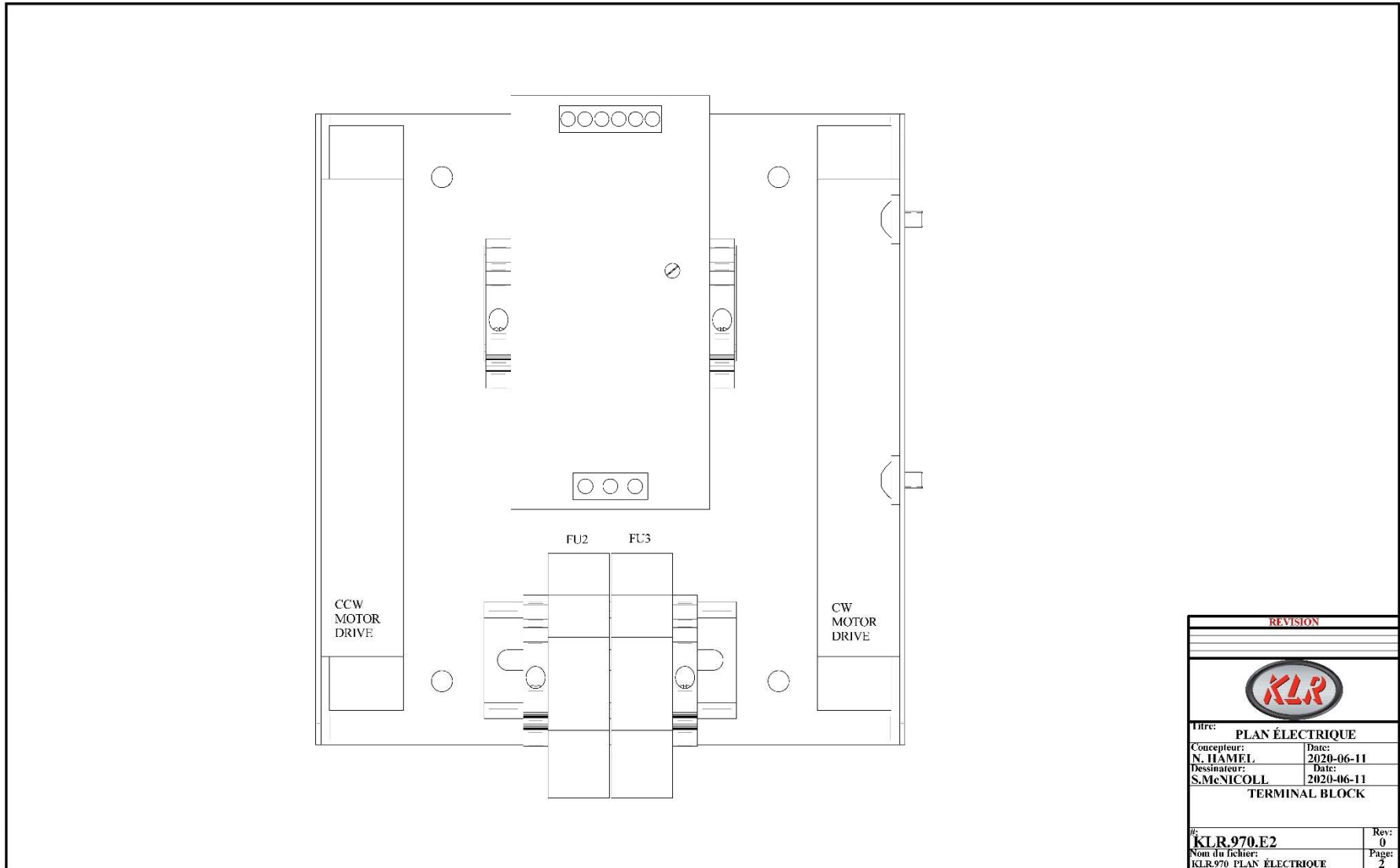


## ELECTRICAL PLAN

ATTENTION: The INTERROLL 9006 drum motor drive is now discontinued.



REVISION	
	
Titre: <b>PLAN ÉLECTRIQUE</b>	
Concepteur: <b>N. HAMEL</b>	Date: <b>2020-06-11</b>
Dessinateur: <b>S.McNICOLL</b>	Date: <b>2020-06-11</b>
<b>DISTRIBUTION</b>	
N°: <b>KLR.970.E1</b>	Rev: <b>0</b>
Nom du fichier: <b>KLR.970 PLAN ÉLECTRIQUE</b>	Page: <b>1</b>



REVISION	
	
Titre: <b>PLAN ÉLECTRIQUE</b>	
Concepteur: <b>N. HAMEL</b>	Date: 2020-06-11
Dessinateur: <b>S. McNICOLL</b>	Date: 2020-06-11
<b>TERMINAL BLOCK</b>	
#: <b>KLR.970.E2</b>	Rev: 0
Nom du fichier: <b>KLR.970 PLAN ÉLECTRIQUE</b>	Page: 2